

2741 MIDDLEFIELD ROAD, PALO ALTO



Property Highlights

Suite Size 3012 SF
Price per Sq. Ft. \$1.85/Sq. Ft. GROSS
Address 2741 Middlefield Rd.
City Palo Alto
County Santa Clara
Zip Code 94303

Ventana Property Services is pleased to present for lease the prime office space located at 2741 Middlefield Road in charming Midtown Palo Alto. The office space is 3012 square feet. Lease rates are \$1.85 per square foot GROSS. The property is easily accessible from Highway 101, Oregon Expressway, Highway 280 and El Camino Real on a high traffic corridor.

FOR LEASE

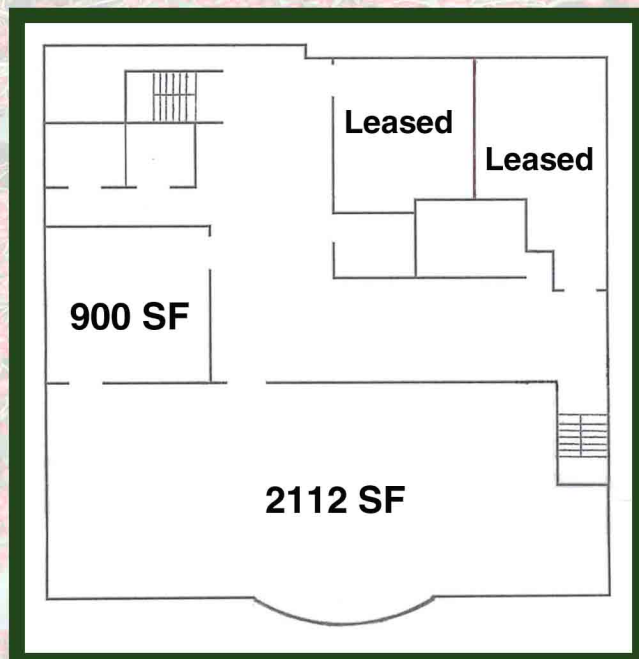
Exclusively Listed By:



VENTANA

PROPERTY SERVICES

Panette Talia
(650) 847-2041
Fax (650) 847-2003
695 Oak Grove Ave.
Suite 200
Menlo Park, CA 94025



This information is believed to be correct but no representation or warranties, expressed or implied, are made as to the accuracy or completeness of the information. Lessee must verify all information.